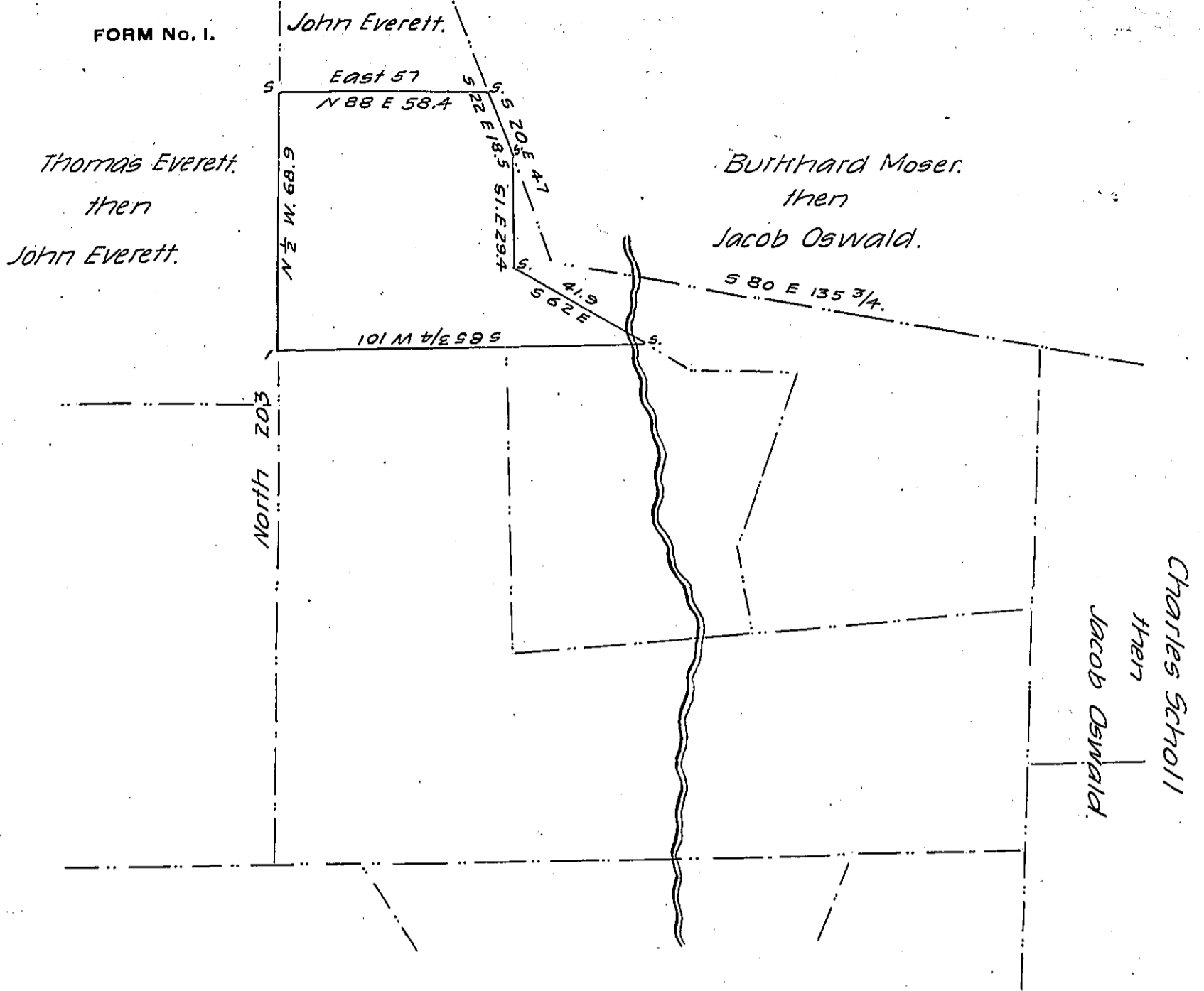


FORM No. 1.



Draft of a tract of land, situated in Lynn township, in the County of Lehigh, containing twenty-eight acres, seventy-seven perches, and allowance of six per cent. for roads &c, surveyed for John P. Reitz and Elias Reitz, the 16th day of June, 1870, being a part of a larger tract of One hundred and Ninety-nine acres, fifty perches, and allowance, originally surveyed in pursuance of a warrant granted to Henry Oswald, dated the 6th day of June 1752.

Geo. Blank C.S.

To J. M. Campbell, Esq
Surveyor General.

IN TESTIMONY that the above is a copy of the original remaining on file in the Department of Internal Affairs of Pennsylvania, made conformably to an Act of Assembly approved the 16th day of February, 1833, I have hereunto set my Hand and caused the Seal of said Department to be affixed at Harrisburg, this fifteenth day of June 1906.

Loac B Brown
Secretary of Internal Affairs.